

**DOCUMENT 00 90 00**  
**ADDENDUM**

**ADDENDUM No.:** 1

**DATE:** May 4, 2023

**RE:** NORTHWOOD TECHNICAL COLLEGE  
NEW RICHMOND EXTERIOR IMPROVEMENTS  
1019 SOUTH KNOWLES AVENUE  
NEW RICHMOND, WISCONSIN 54017  
PROJECT NO. 23016

**FROM:** HSR Associates, Inc  
100 Milwaukee Street  
La Crosse, WI 54603  
(608) 784-1830

**TO:** Prospective Bidders

---

This addendum forms a part of the Contract Documents and modifies the original Bidding Documents dated April 2023. Acknowledge receipt of this Addendum in the space provided on the bid form. Failure to do so may subject the Bidder to disqualification.

This Addendum consists of: 2 pages, 1 document, 1 section, and 1 drawing.

---

**CHANGES TO INTRODUCTORY INFORMATION AND BIDDING REQUIREMENTS:**

1. Document 00 41 00 Bid Form
  - a. See the revised document included in this addendum. Disregard the previous version.
  - b. Revised the section reference in the Unit Prices section from "36 10 00" to "06 10 00" to correct an inconsistency.

**CHANGES TO GENERAL REQUIREMENTS:**

2. Section 01 22 00 Unit Prices
  - a. See the narrative, immediately below, describing revisions to the section.
  - b. In paragraph 1.07 A.1.a. change "20 panels" to "8 panels" to correct an inconsistency between this section and the bid form.

**CHANGES TO SPECIFICATIONS:**

3. Section 08 16 13 Fiberglass Doors
  - a. See the revised section included in this addendum. Disregard the previous version.
  - b. Added paragraph 2.01 A.3. to list Vale FRP Doors as a manufacturer.
  - c. Removed paragraphs 2.02 and 2.03 to remove the description of pultruded fiberglass doors from the specification.

## **CHANGES TO DRAWINGS**

4. Sheet A101 WORKING PLANS AND DOOR SCHEDULE 30"x42"
  - a. See the revised sheet included in this addendum. Disregard the previous version.
  - b. See clouded changes and details 1 & 10 related to coordinating with Owner's security consultant for disconnection and reconnection of electrical items.
  - c. See clouded changes at door schedule remarks items 3, 4, & 5.

**END OF DOCUMENT 00 90 00**

**DOCUMENT 00 41 00**

**BID FORM**

BIDDER: \_\_\_\_\_

BID FOR SINGLE PRIME CONTRACT

**PROJECT: NORTHWOOD TECHNICAL COLLEGE  
NEW RICHMOND EXTERIOR IMPROVEMENTS  
1019 SOUTH KNOWLES AVENUE  
NEW RICHMOND, WISCONSIN 54017  
HSR PROJECT NO. 23016**

**TO: NORTHWOOD TECHNICAL COLLEGE  
1900 COLLEGE DRIVE  
RICE LAKE, WISCONSIN 54868**

**BASE BID**

The undersigned, having examined the site where the Work is to be executed and become familiar with local conditions affecting the cost of the Work and carefully examined the Project Manual, the Project Drawings, all other Bidding Documents and Addenda thereto prepared by the AE, HSR Associates, Inc., hereby agrees to provide all labor, materials, equipment and services necessary for the complete and satisfactory execution of the ENTIRE WORK, in the time frame stipulated in these contract documents, for the Base Bid stipulated sum of:

\_\_\_\_\_ Dollars (\$\_\_\_\_\_ .00)

**UNIT PRICES**

The undersigned agrees to add or deduct portions of the Work from the Contract as described in the Project Manual, Section 01 22 00 Unit Prices, for the following Unit Price amounts:

Item	Reference Section	Unit Price	Quantity included in Lump Sum Base Bid
UP-1 Roof and wall sheathing replacement	06 10 00	\$_____ / panel	8ct - 4'x8' panels

Page Intentionally Left Blank

**BIDDER'S CHOICE SUBSTITUTIONS**

The following Bidder's Choice Substitution is proposed for your consideration subject to the requirements set forth in Document 00 22 13 Supplementary Instructions to Bidders, Subparagraph 3.3.5:

Substitution No. S1:

For substituting \_\_\_\_\_

\_\_\_\_\_

Type, Brand, Catalog No. \_\_\_\_\_

Manufacturer \_\_\_\_\_

Deduct from BASE BID \_\_\_\_\_ Dollars (\$ \_\_\_\_\_ .00)

The following Bidder's Choice Substitution is proposed for your consideration subject to the requirements set forth in Document 00 22 13 Supplementary Instructions to Bidders, Subparagraph 3.3.5:

Substitution No. S1:

For substituting \_\_\_\_\_

\_\_\_\_\_

Type, Brand, Catalog No. \_\_\_\_\_

Manufacturer \_\_\_\_\_

Deduct from BASE BID \_\_\_\_\_ Dollars (\$ \_\_\_\_\_ .00)

Page Intentionally Left Blank

In submitting this Bid, the undersigned agrees to:

1. Hold this Bid open for **30** days.
2. Accept the provisions of Instructions to Bidders regarding disposition of Bid Security.
3. Enter into and execute an Agreement, if awarded on the basis of this Bid, and to furnish Performance and Labor and Material Payment Bonds according to the Supplementary Conditions.
4. Accomplish work according to the Contract Documents.
5. Complete the work by the time stated in Section 01 10 00 Summary of the Work.

Receipt of the following Addenda and inclusion of their provisions in this Bid is hereby acknowledged:

Addendum No. \_\_\_\_\_ Dated \_\_\_\_\_

Addendum No. \_\_\_\_\_ Dated \_\_\_\_\_

Addendum No. \_\_\_\_\_ Dated \_\_\_\_\_

Addendum No. \_\_\_\_\_ Dated \_\_\_\_\_

Attached hereto are the required:

- a.  Bid Security

FIRM NAME: \_\_\_\_\_

(Affix seal if  
Corporation)

By: \_\_\_\_\_

Title: \_\_\_\_\_

By: \_\_\_\_\_

Title: \_\_\_\_\_

Date: \_\_\_\_\_

Official Address: \_\_\_\_\_

\_\_\_\_\_

Telephone: \_\_\_\_\_

**END OF DOCUMENT 00 41 00**

Page Intentionally Left Blank



**SECTION 08 16 13  
FIBERGLASS DOORS**

**PART 1 GENERAL**

**1.01 SECTION INCLUDES**

- A. Fiberglass doors.

**1.02 RELATED REQUIREMENTS**

- A. Section 07 92 00 - Joint Sealants: Sealing joints between door frames and adjacent construction.
- B. Section 08 71 00 - Door Hardware.

**1.03 REFERENCE STANDARDS**

- A. AAMA 611 - Voluntary Specification for Anodized Architectural Aluminum 2014 (2015 Errata).
- B. ANSI/SDI A250.4 - Test Procedure and Acceptance Criteria for Physical Endurance for Steel Doors, Frames and Frame Anchors 2011.
- C. ASTM B209 - Standard Specification for Aluminum and Aluminum-Alloy Sheet and Plate 2014.
- D. ASTM B221 - Standard Specification for Aluminum and Aluminum-Alloy Extruded Bars, Rods, Wire, Profiles, and Tubes 2014.
- E. ASTM D635 - Standard Test Method for Rate of Burning and/or Extent and Time of Burning of Plastics in a Horizontal Position 2014.
- F. ASTM E84 - Standard Test Method for Surface Burning Characteristics of Building Materials 2016.

**1.04 SUBMITTALS**

- A. See Section 01 30 00 - Administrative Requirements for submittal procedures.
- B. Provide submittal transmittals that include all submittal items identified in each submittal group below.
- C. It is permissible for a single supplier to combine submittal items for multiple sections within Division 8 Openings. This permission applies to sections that describe requirements for glazing, hardware, any passage door and windows that are framed using the same systems as the passage doors. Identify all sections that are included in the transmittal on the coversheet.
- D. Review Submittals - Preparatory
  - 1. Product Data: Provide manufacturer's standard details, installation instructions, hardware and anchor recommendations.
  - 2. Shop Drawings: Indicate layout and profiles; include assembly methods.
    - a. Indicate product components, including hardware reinforcement locations and preparations, accessories, finish colors, patterns, and textures.
    - b. Indicate wall conditions, door and frame elevations, sections, materials, gauges, finishes, location of door hardware by dimension, and details of openings; use same reference numbers indicated on drawings to identify details and openings.
- E. Review Submittals - Samples
  - 1. Selection Samples: Submit two complete sets of color chips, illustrating manufacturer's available finishes, colors, and textures.
- F. Information Submittals - Preparatory
- G. Closeout Submittals
  - 1. Warranty: Submit manufacturer warranty and ensure that forms have been completed in Owner's name and registered with manufacturer; include detailed terms of warranty.
- H. Maintenance Materials
  - 1. Maintenance Materials: Furnish the following for Owner's use in maintenance of project.
    - a. See Section 01 60 00 - Product Requirements, for additional provisions.

**1.05 QUALITY ASSURANCE**

- A. Manufacturer Qualifications: Company specializing in manufacturing products of the type specified in this section, with not less than three years of documented experience.

## 1.06 DELIVERY, STORAGE, AND HANDLING

- A. Deliver materials in manufacturer's original, unopened, undamaged containers with identification labels intact.
- B. Store materials in original packaging, under cover, protected from exposure to harmful weather conditions and from direct contact with water.
  - 1. Store at temperature and humidity conditions recommended by manufacturer.
  - 2. Do not use non-vented plastic or canvas shelters.
  - 3. Immediately remove wet wrappers.
- C. Store in position recommended by manufacturer, elevated minimum 4 inches above grade, with minimum 1/4 inch space between doors.

## 1.07 WARRANTY

- A. See Section 01 78 00 - Closeout Submittals, for additional warranty requirements.

## PART 2 PRODUCTS

### 2.01 MANUFACTURERS

- A. Fiberglass Reinforced Polyester Doors:
  - 1. Special-Lite: [www.special-lite.com](http://www.special-lite.com)
  - 2. FRP Architectural Doors: [www.frparch.com](http://www.frparch.com)
  - 3. Vale FRP Doors, Entrances and Hardware: [www.valedoors.com](http://www.valedoors.com)

### 2.04 FIBERGLASS REINFORCED POLYESTER FLUSH DOORS WITH ALUMINUM STILES AND RAILS

- A. Door Thickness: 1-3/4 inches.
- B. Stiles and Rails: Aluminum extrusions made from prime-equivalent billet that is produced from 100% reprocessed 6063-T6 alloy recovered from industrial processes, minimum of 2-5/16-inch depth.
- C. Corners: Mitered.
- D. Provide joinery of 3/8-inch diameter full-width tie rods through extruded splines top and bottom integral to standard tubular shaped stiles and rails reinforced to accept hardware as specified.
- E. Securing Internal Door Extrusions: 3/16-inch angle blocks and locking hex nuts for joinery. Welds, glue, or other methods are not acceptable.
- F. Furnish extruded stiles and rails with integral reglets to accept face sheets. Lock face sheets into place to permit flush appearance.
- G. Rail caps or other face sheet capture methods are not acceptable.
- H. Extrude top and bottom rail legs for interlocking continuous weather bar.
- I. Meeting Stiles: Pile brush weatherseals. Extrude meeting stile to include integral pocket to accept pile brush weatherseals.
- J. Bottom of Door: Install bottom weather bar with nylon brush weatherstripping into extruded interlocking edge of bottom rail.
- K. Glue: Use of glue to bond sheet to core or extrusions is not acceptable.
- L. Face Sheet:
  - 1. Material: FRP, 0.120-inch thickness, finish color throughout.
  - 2. Protective coating: Abuse-resistant engineered surface.
  - 3. Texture: Pebble.
  - 4. Color: As selected from manufacturer's standard line.
  - 5. Adhesion: The use of glue to bond face sheet to foam core is prohibited.
- M. Core:
  - 1. Material: Poured-in-place polyurethane foam.
  - 2. Density: Minimum of 5 pounds per cubic foot.
  - 3. R-Value: Minimum of 9.
- N. Hardware:
  - 1. Pre-machine doors in accordance with templates from specified hardware manufacturers and hardware schedule.

2. Factory install hardware.
- O. Aluminum Members:
1. Aluminum extrusions made from prime-equivalent billet that is produced from 100% reprocessed 6063-T6 alloy recovered from industrial processes ASTM B221.
  2. Sheet and Plate: ASTM B209.
  3. Alloy and Temper: As required by manufacturer for strength, corrosion resistance, application of required finish, and control of color.
- P. Components: Door and frame components from same manufacturer.
- Q. Fasteners:
1. Material: Aluminum, 18-8 stainless steel, or other noncorrosive metal.
  2. Compatibility: Compatible with items to be fastened.
  3. Exposed Fasteners: Screws with finish matching items to be fastened.
- R. Tubular Framing:
1. Size and Type: As indicated on the Drawings.
  2. Materials: Aluminum extrusions made from prime-equivalent billet that is produced from 100% reprocessed 6063-T6 alloy recovered from industrial processes, 1/8-inch minimum wall thickness.
  3. Applied Door Stops: 0.625-inch high, with screws and weatherstripping. Door stop shall incorporate pressure gasketing for weathering seal. Counterpunch fastener holes in door stop to preserve full metal thickness under fastener head.
  4. Frame Members: Box type with 4 enclosed sides. Open-back framing is not acceptable.
  5. Sealant: Seal joints before assembling frame members.
  6. Joints:
    - a. Secure joints with fasteners.
    - b. Provide hairline butt joint appearance.
  7. Field Fabrication: Field fabrication of framing using stick material is not acceptable.
  8. Applied Stops: For side, transom, and borrowed lites and panels. Applied stops shall incorporate pressure gasketing for weathering seal. Reinforce with solid bar stock fill for frame hardware attachments.
  9. Hardware:
    - a. Pre-machine and reinforce frame members for hardware in accordance with manufacturer's standards and hardware schedule.
    - b. Factory install hardware.
  10. Anchors:
    - a. Anchors appropriate for wall conditions to anchor framing to wall materials.
    - b. Door Jamb and Header Mounting Holes: Maximum of 24-inch centers.
    - c. Secure head and sill members of transom, side lites, and similar conditions.
- S. Fabrication
1. Sizes and Profiles: Required sizes for door and frame units, and profile requirements shall be as indicated on the Drawings.
  2. Coordination of Fabrication: Field measure before fabrication and show recorded measurements on shop drawings.
  3. Assembly:
    - a. Complete cutting, fitting, forming, drilling, and grinding of metal before assembly.
    - b. Remove burrs from cut edges.
  4. Welding: Welding of doors or frames is not acceptable.
  5. Fit:
    - a. Maintain continuity of line and accurate relation of planes and angles.
    - b. Secure attachments and support at mechanical joints with hairline fit at contacting members.
  6. Class A Flame Spread and Smoke Developed Rating:
    - a. Class A flame spread and smoke developed rating on interior faces of exterior panels and both faces of interior panels.
    - b. Flame Spread, ASTM E84: Maximum of 25.
    - c. Smoke Developed, ASTM E84: Maximum of 450.

7. Hardware
  - a. Pre-machine doors in accordance with templates from specified hardware manufacturers and hardware schedule.
  - b. Factory install hardware.
8. Aluminum Finishes
  - a. Class II Natural Anodized Finish: AAMA 611 AA-M12C22A31 Clear anodic coating not less than 0.7 mils thick.

## **2.05 ACCESSORIES**

- A. Stops for Glazing: Fiberglass, unless otherwise indicated or required by fire rating; provided by door manufacturer to fit factory made openings, with color and texture to match door; fasteners shall maintain waterproof integrity.
  1. Glazed Openings: Provide removable stops on interior side.
  2. Opening Sizes and Shapes: As indicated on drawings.
- B. Glazing: See Section 08 80 00.

## **PART 3 EXECUTION**

### **3.01 EXAMINATION**

- A. Verify actual dimensions of openings by field measurements before door fabrication; show recorded measurements on shop drawings.
- B. Do not begin installation until substrates have been properly prepared.

### **3.02 PREPARATION**

- A. Prepare surfaces using the methods recommended by the manufacturer for achieving the best result for the substrate under the project conditions.
- B. Clean and prepare substrate in accordance with manufacturer's directions.
- C. Protect adjacent work and finish surfaces from damage during installation.

### **3.03 INSTALLATION**

- A. Install in accordance with manufacturer's instructions; do not penetrate frames with anchors.
- B. Set units plumb, level, and true-to-line, without warping or racking doors, and with specified clearances; anchor in place.
- C. Separate aluminum and other metal surfaces from sources of corrosion of electrolytic action at points of contact with other materials.
- D. Repair or replace damaged installed products.

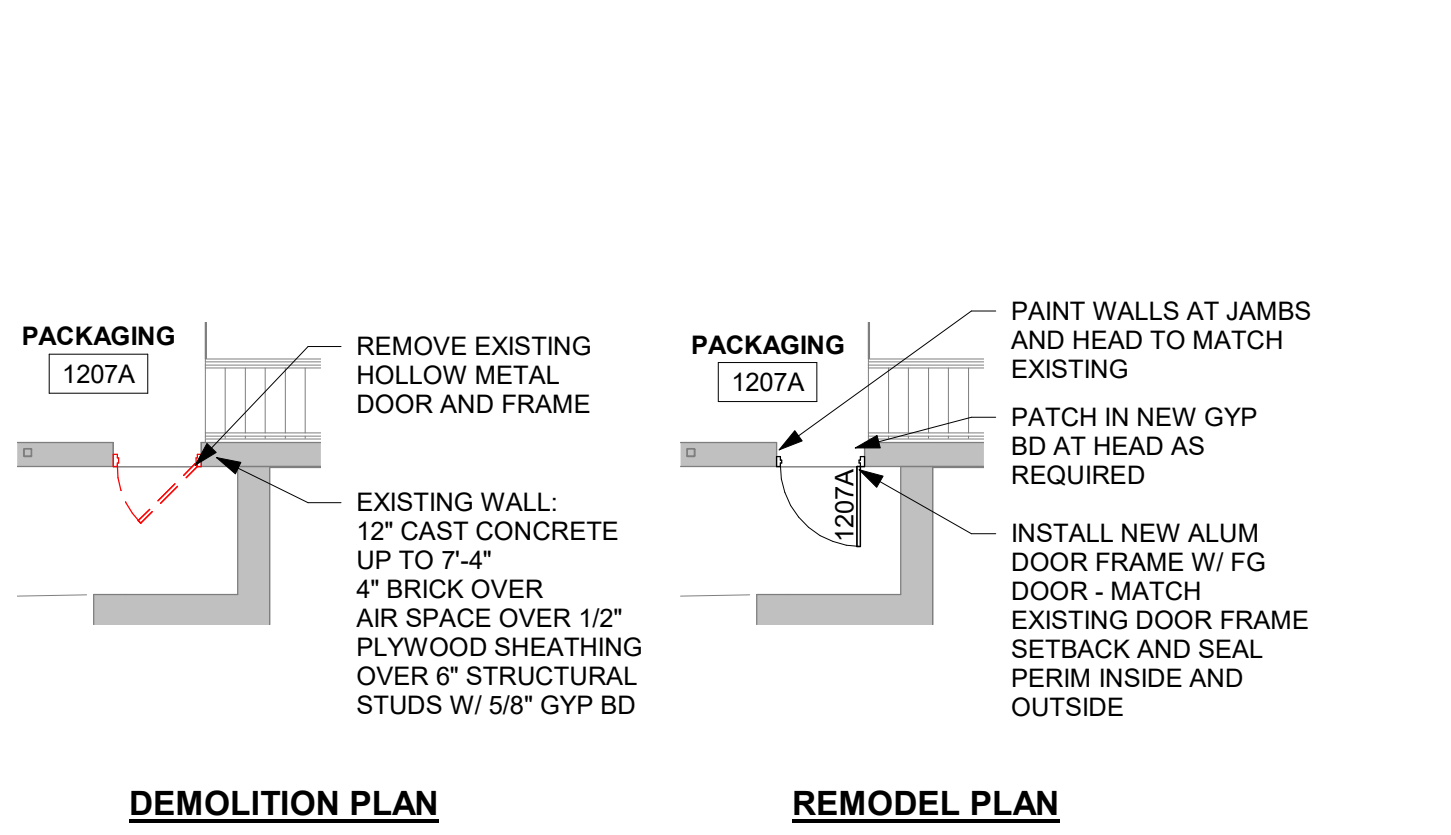
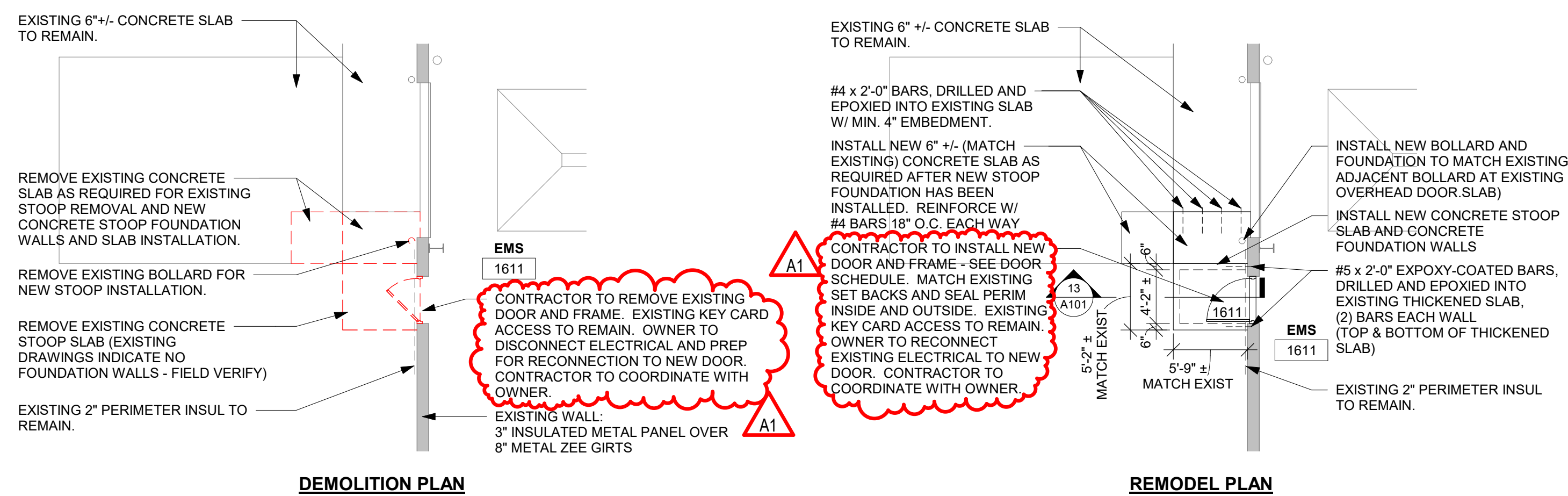
### **3.04 ADJUSTING**

- A. Lubricate, test, and adjust doors to operate easily, free from warp, twist or distortion, and to fit watertight for entire perimeter.
- B. Adjust hardware for smooth and quiet operation.
- C. Adjust doors to fit snugly and close without sticking or binding.

### **3.05 CLEANING**

- A. Clean installed products in accordance with manufacturer's instructions prior to owner's acceptance.

**END OF SECTION**



**DEMOLITION GENERAL NOTES:**

- ALL ITEMS SHOWN DASHED ON DEMOLITION PLANS SHALL BE REMOVED FROM THE SITE UNLESS OTHERWISE NOTED.
- AT WALL TYPES/MATERIALS: PREPARATION FOR NEW FINISHES SHALL INCLUDE, BUT NOT BE LIMITED TO REMOVAL OF EXISTING FINISHES, TAPES, GLUES/MASTIC, NAILS AND RELATED ITEMS. PATCHING OF HOLES, INDENTATIONS AND CRACKS FOR AN ACCEPTABLE SURFACE FOR NEW FINISH INSTALLATION.
- OWNER WILL REMOVE LOOSE FURNISHINGS AND EQUIPMENT FROM THE WORK AREA PRIOR TO START OF CONSTRUCTION UNLESS OTHERWISE NOTED.
- ROOM NUMBERS ARE SHOWN ON THIS PLAN FOR INFORMATIONAL AND COORDINATION PURPOSES ONLY.
- COORDINATE STORAGE LOCATIONS FOR SALVAGED ITEMS WITH OWNER.

**REMODEL GENERAL NOTES:**

- CLEAN, PREP AND PAINT ALL EXISTING EXPOSED STEEL LIFELINES AT DOORS OPENINGS RECEIVING NEW FRAMES.

**ARCHITECTURE ENGINEERING INTERIOR DESIGN**

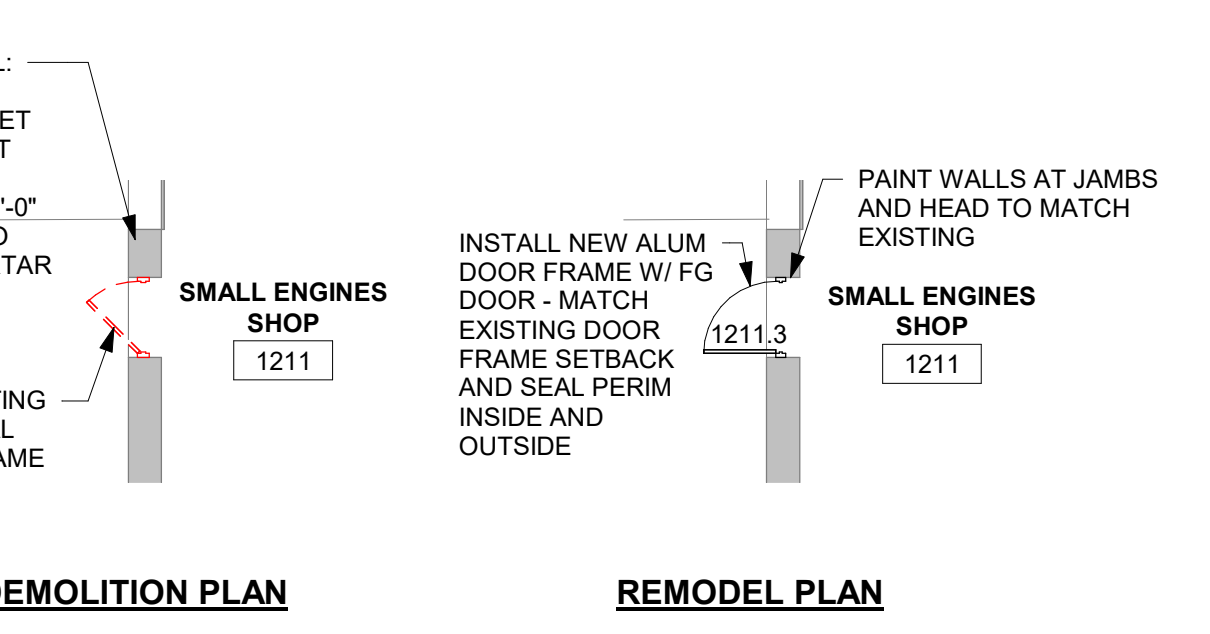
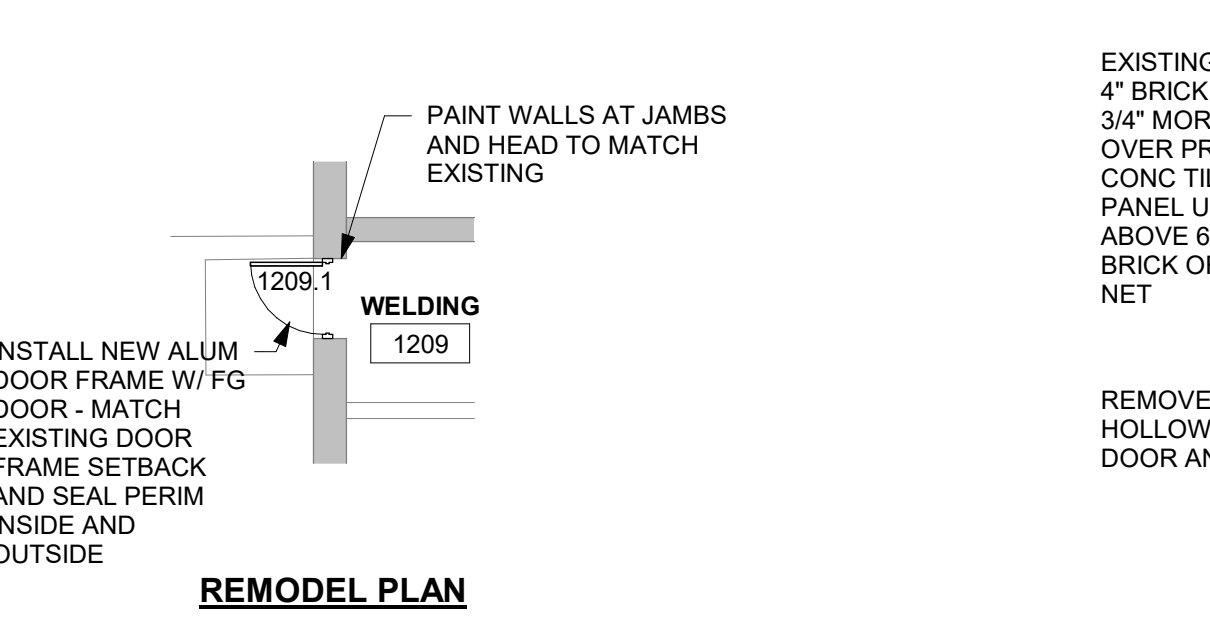
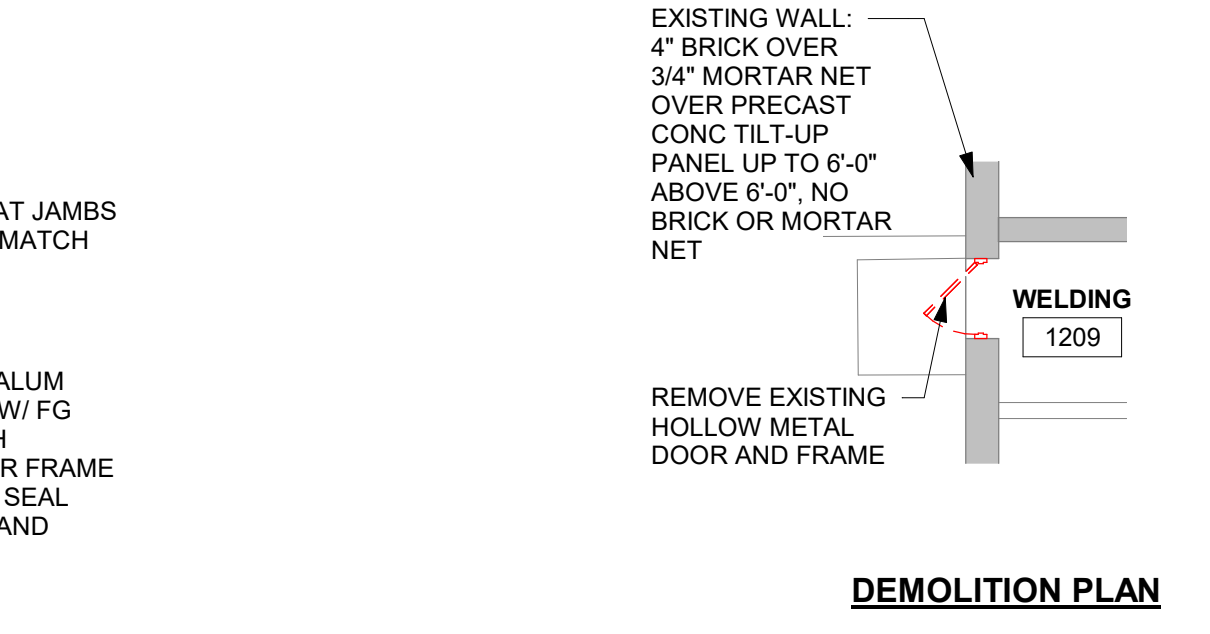
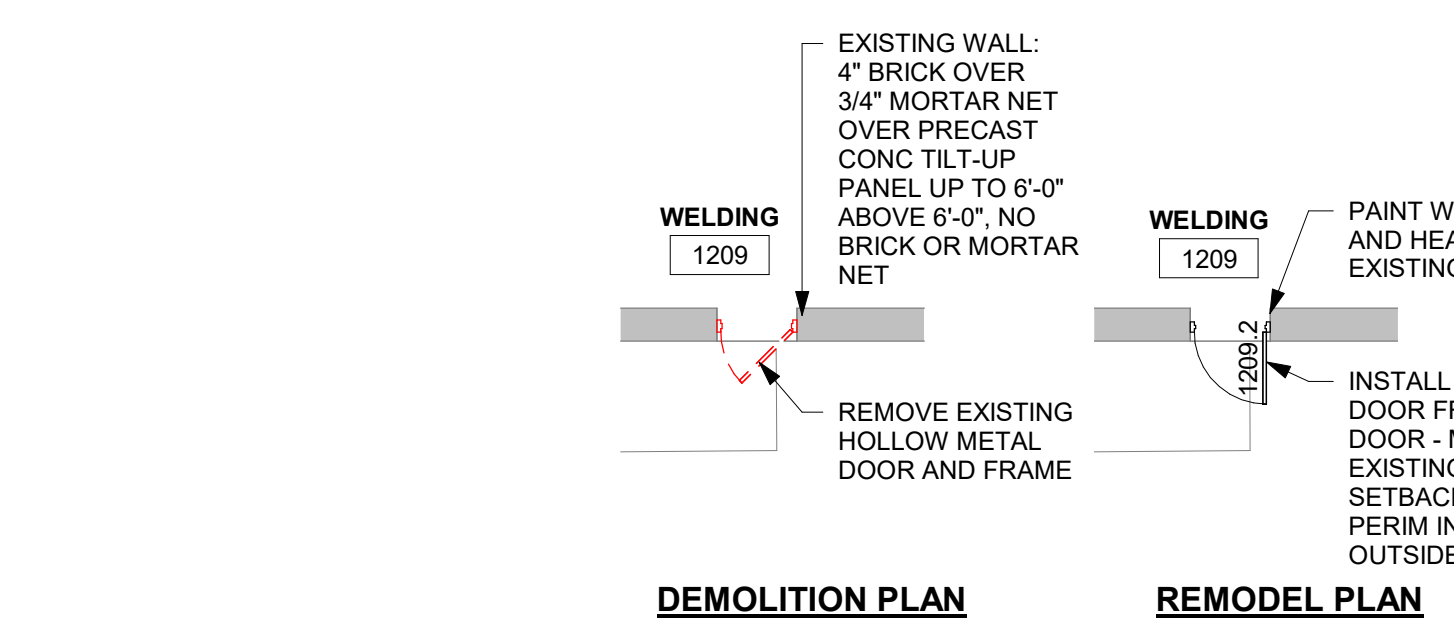
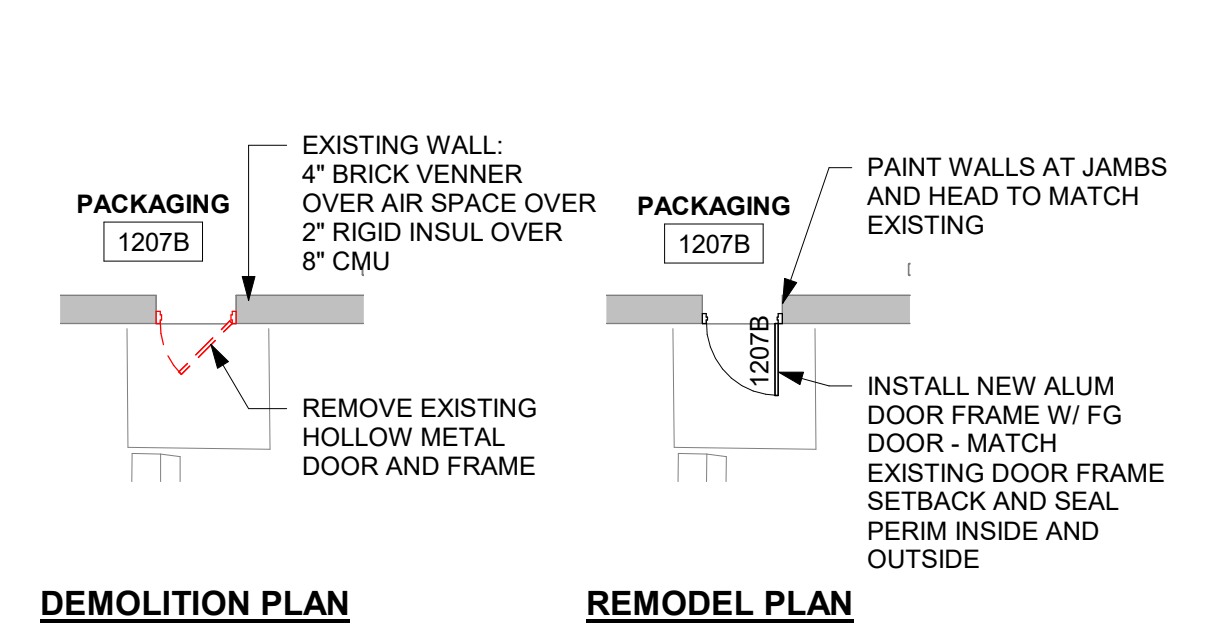
**HSR ASSOCIATES INC.**  
 100 MILWAUKEE STREET  
 LA CROSSE, WISCONSIN  
 PHONE: 608.784.1830  
 FAX: 608.782.5844  
 www.hsrassociates.com

# 1 POWER EQUIPMENT CENTER WORKING PLANS

1/8" = 1'-0"

# 2 DOOR 1207A WORKING PLANS

1/8" = 1'-0"



# 3 DOOR 1207B WORKING PLANS

1/8" = 1'-0"

# 4 DOOR 1209.2 WORKING PLANS

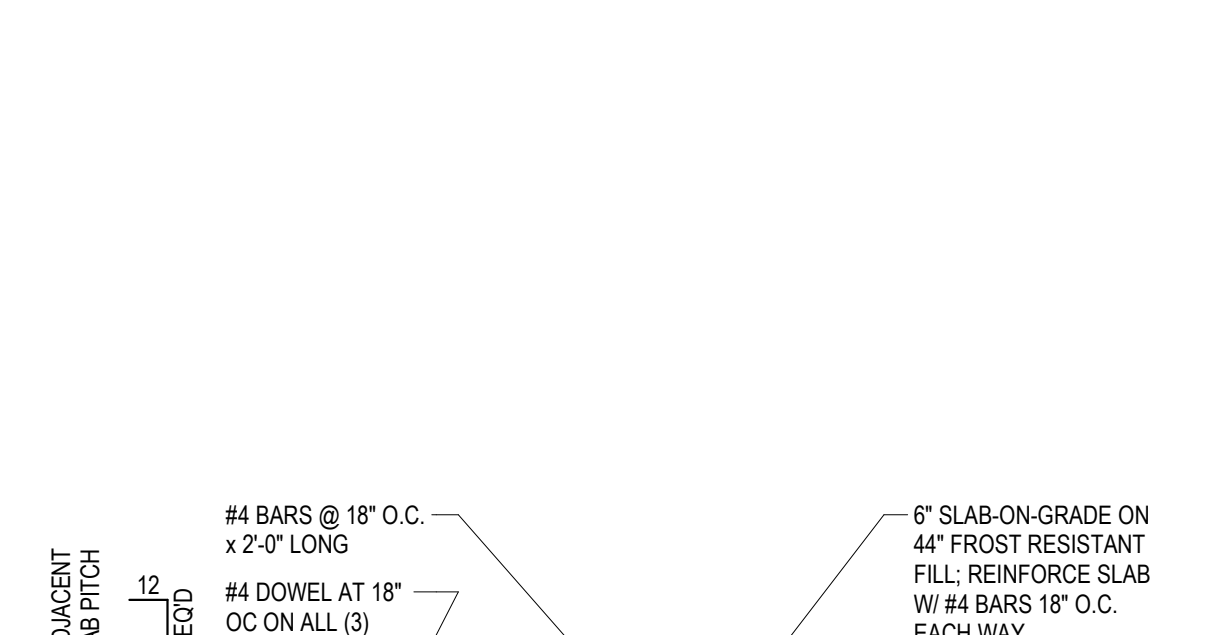
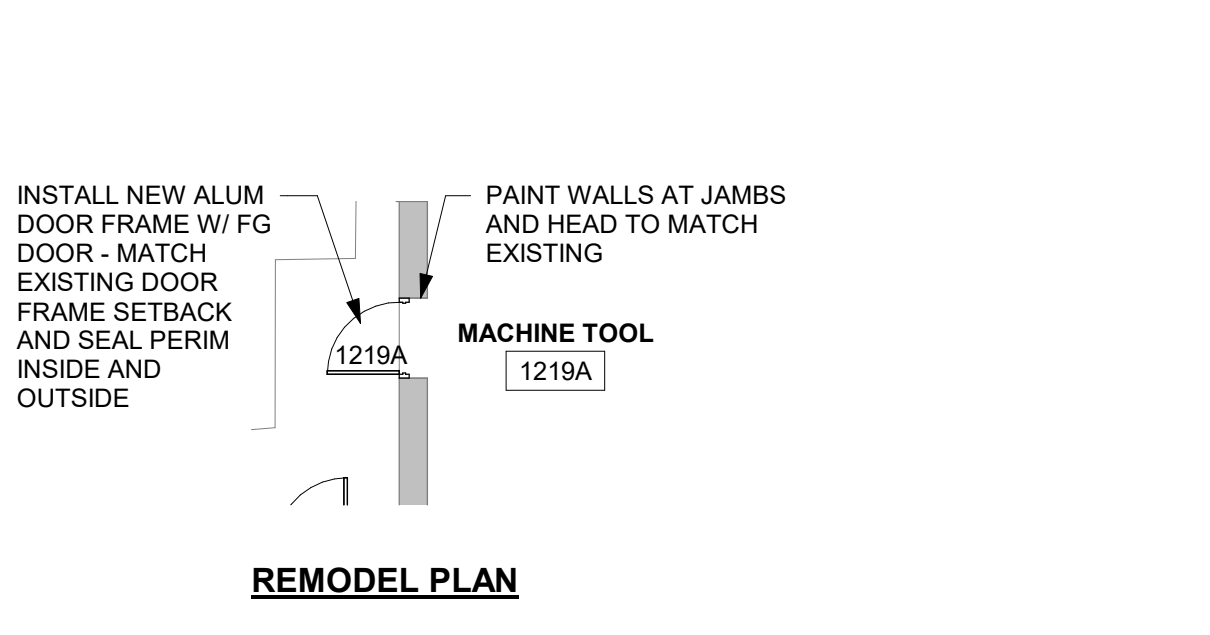
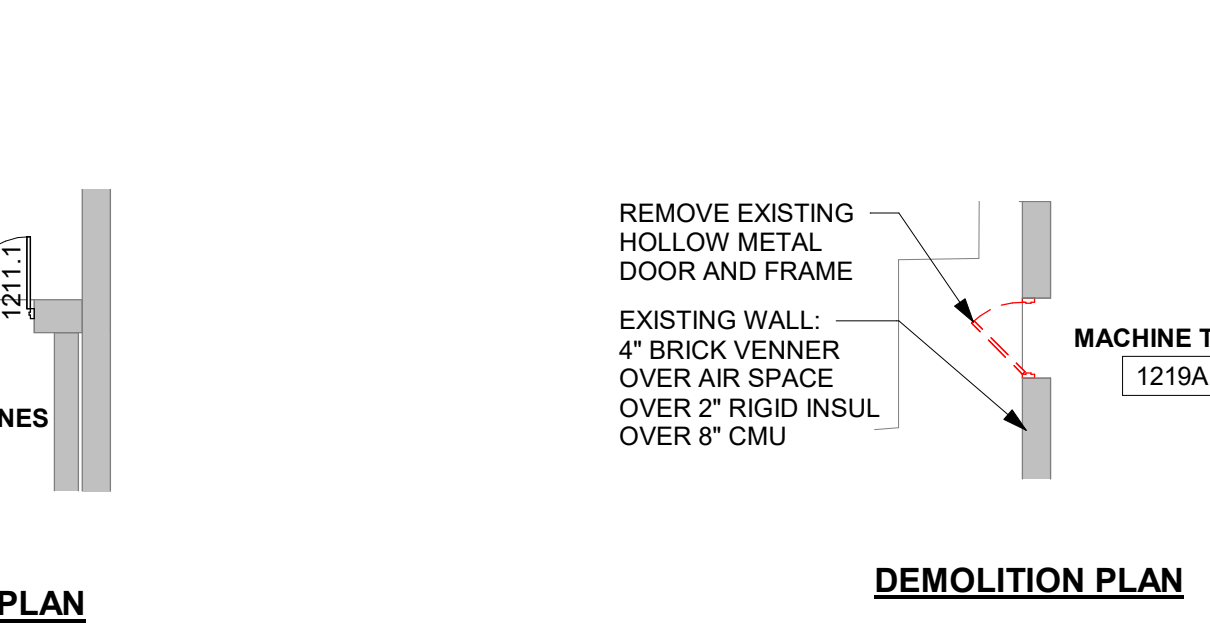
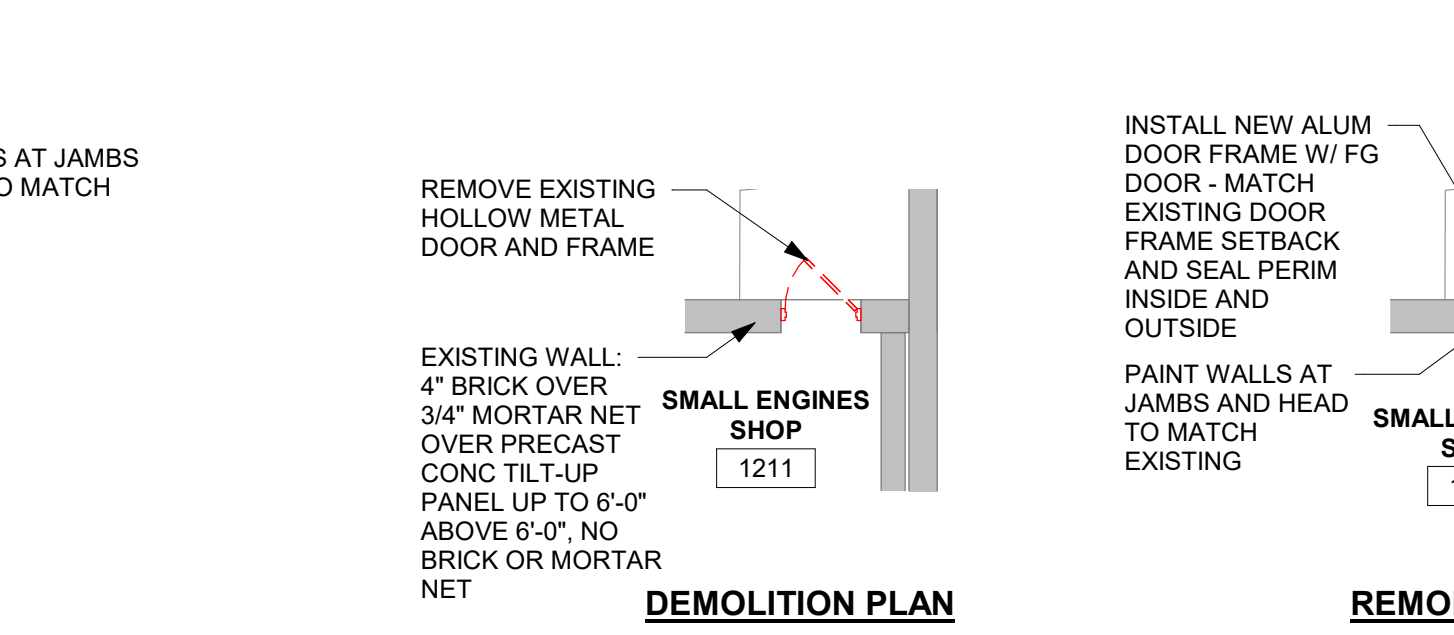
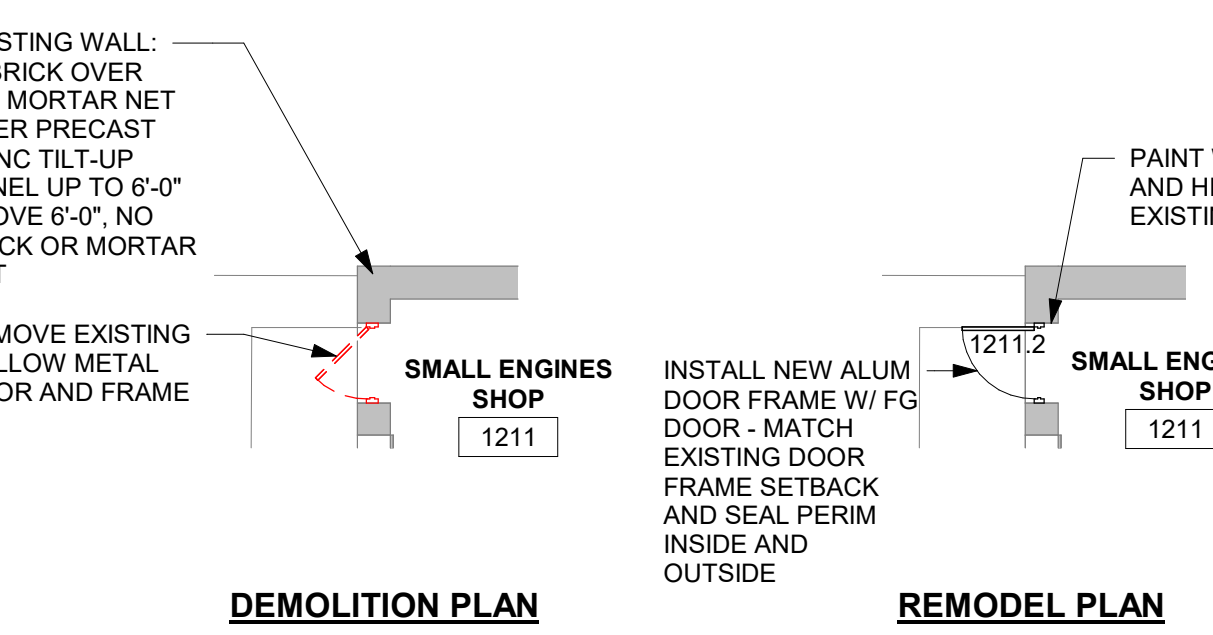
1/8" = 1'-0"

# 5 DOOR 1209.1 WORKING PLANS

1/8" = 1'-0"

# 6 DOOR 1211.3 WORKING PLANS

1/8" = 1'-0"



# 7 DOOR 1211.2 WORKING PLANS

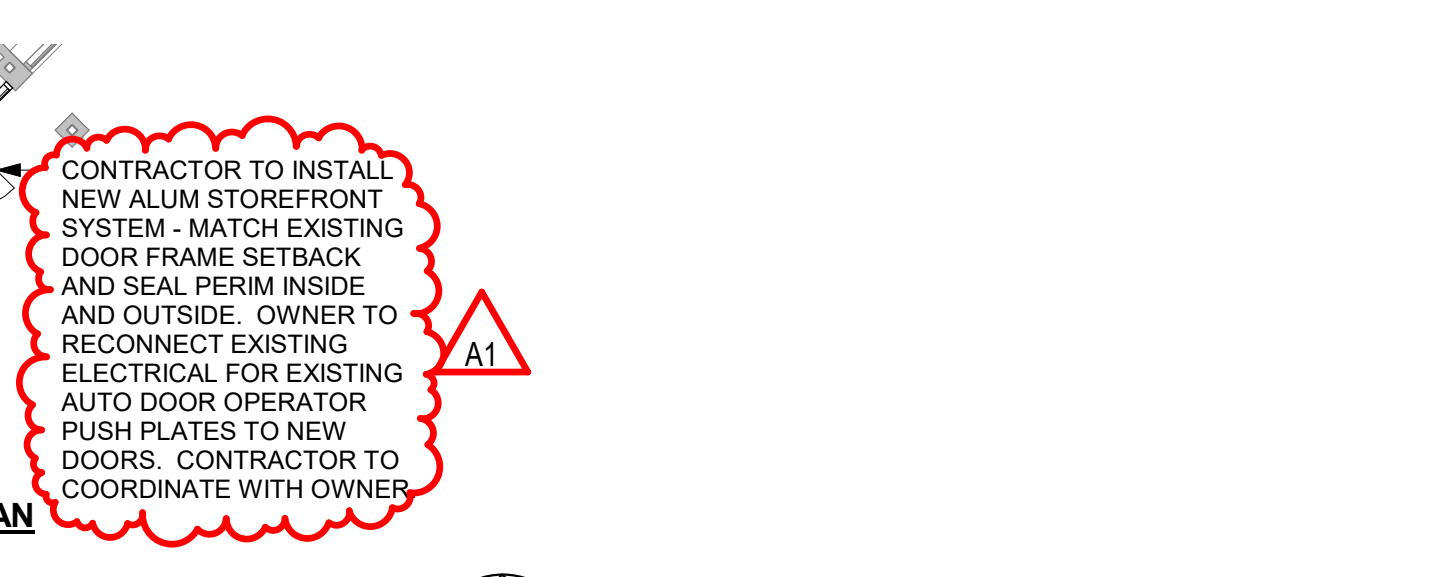
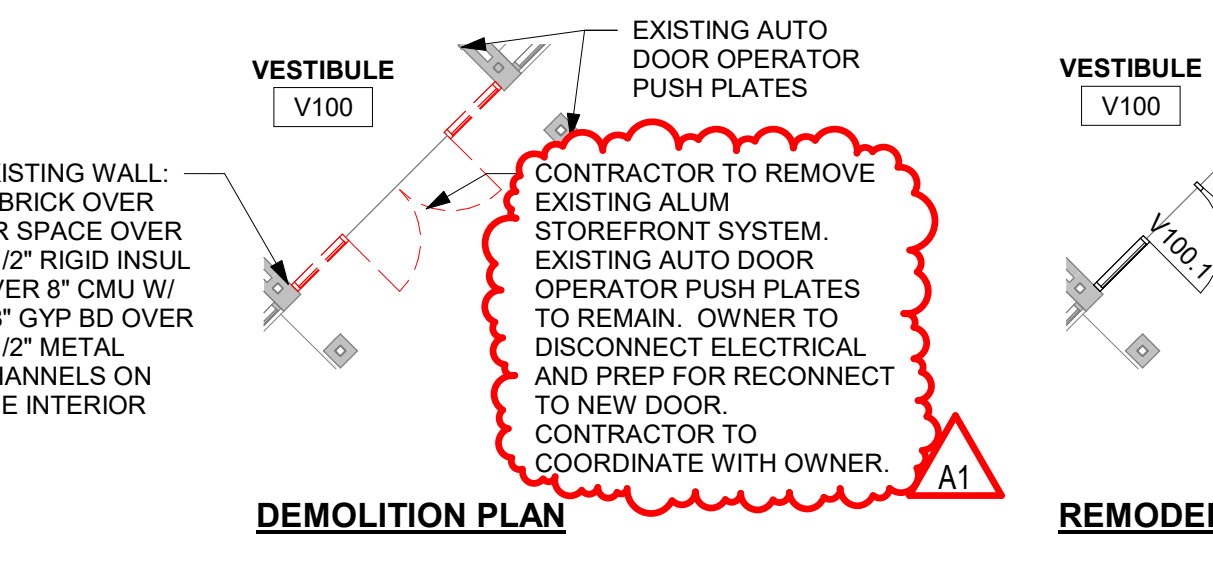
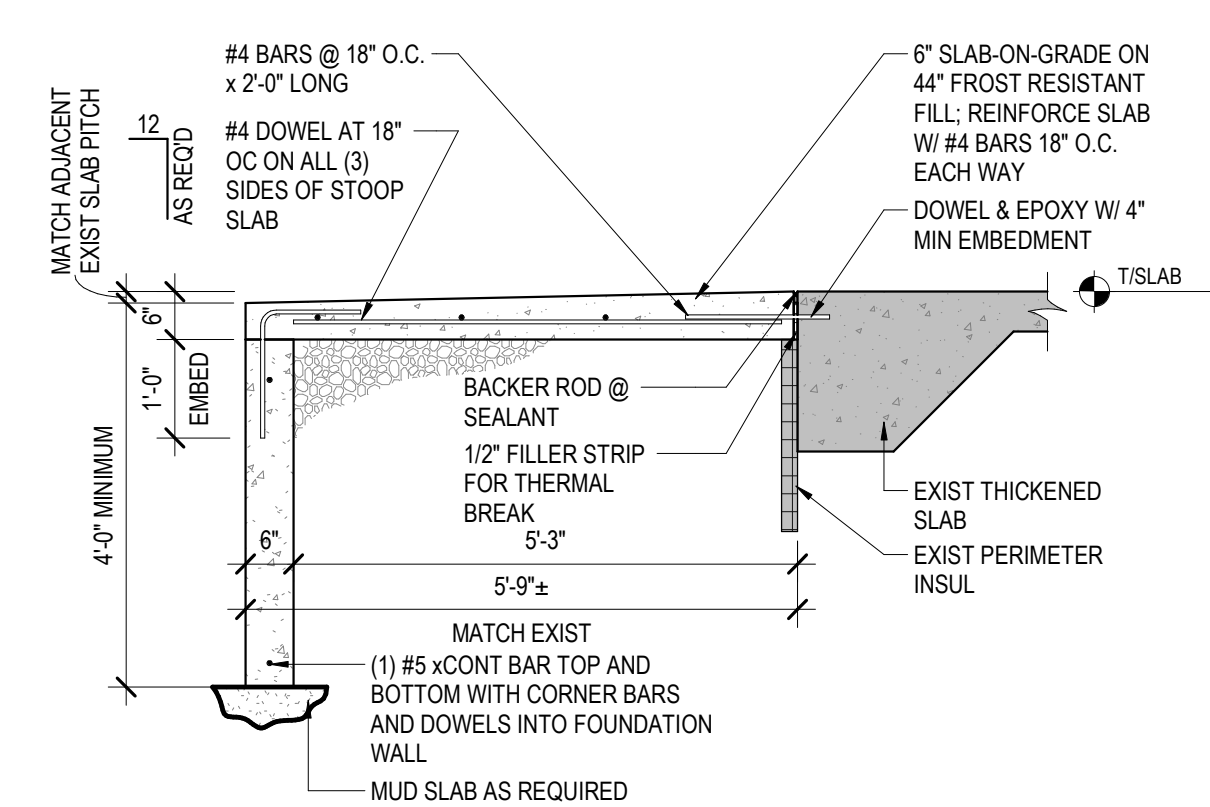
1/8" = 1'-0"

# 8 DOOR 1211.1 WORKING PLANS

1/8" = 1'-0"

# 9 DOOR 1219A WORKING PLANS

1/8" = 1'-0"

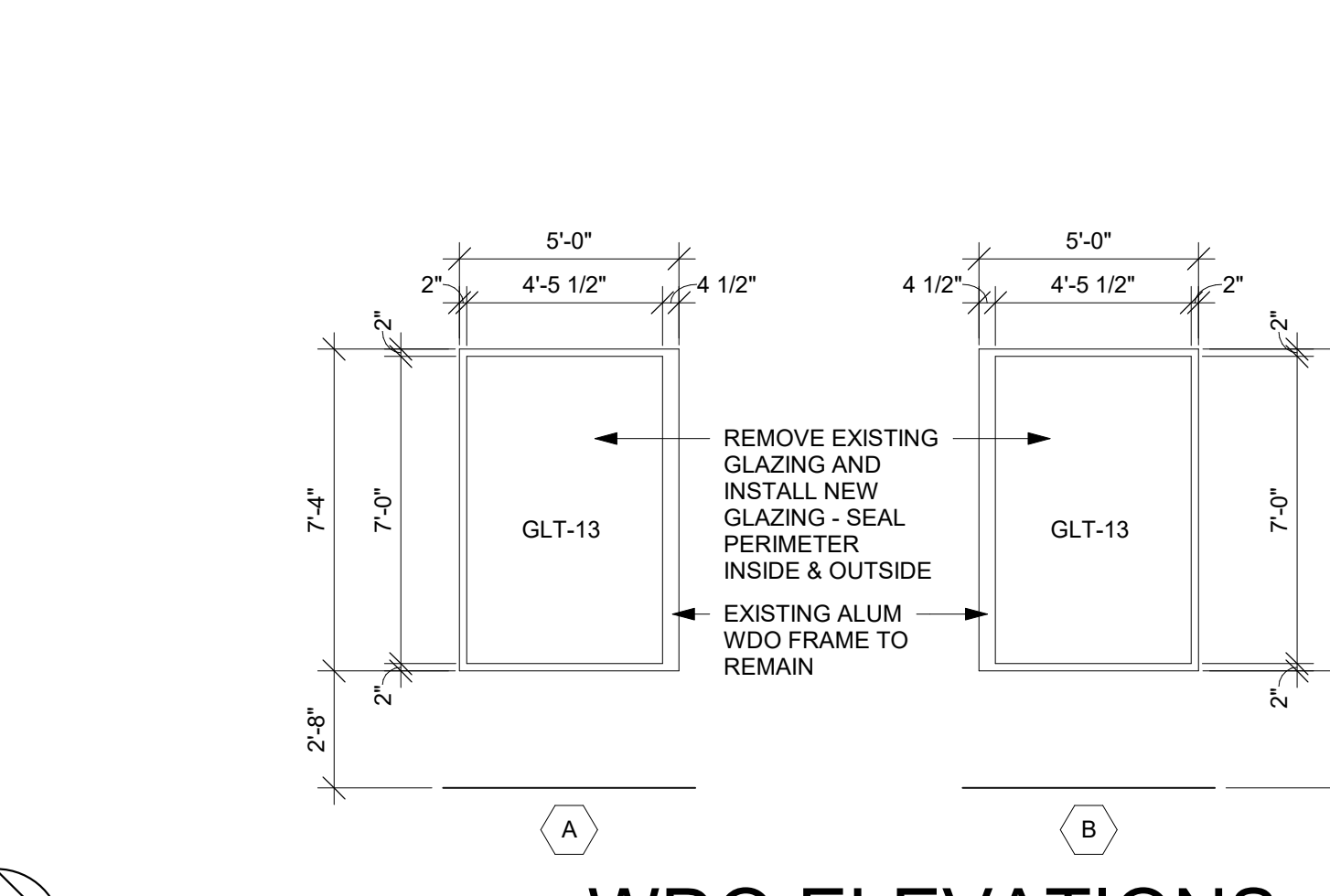


# 10 DOORS V100.1 & V100.2 WORKING PLANS

1/8" = 1'-0"

# 11 WDO A & B WORKING PLANS

1/8" = 1'-0"



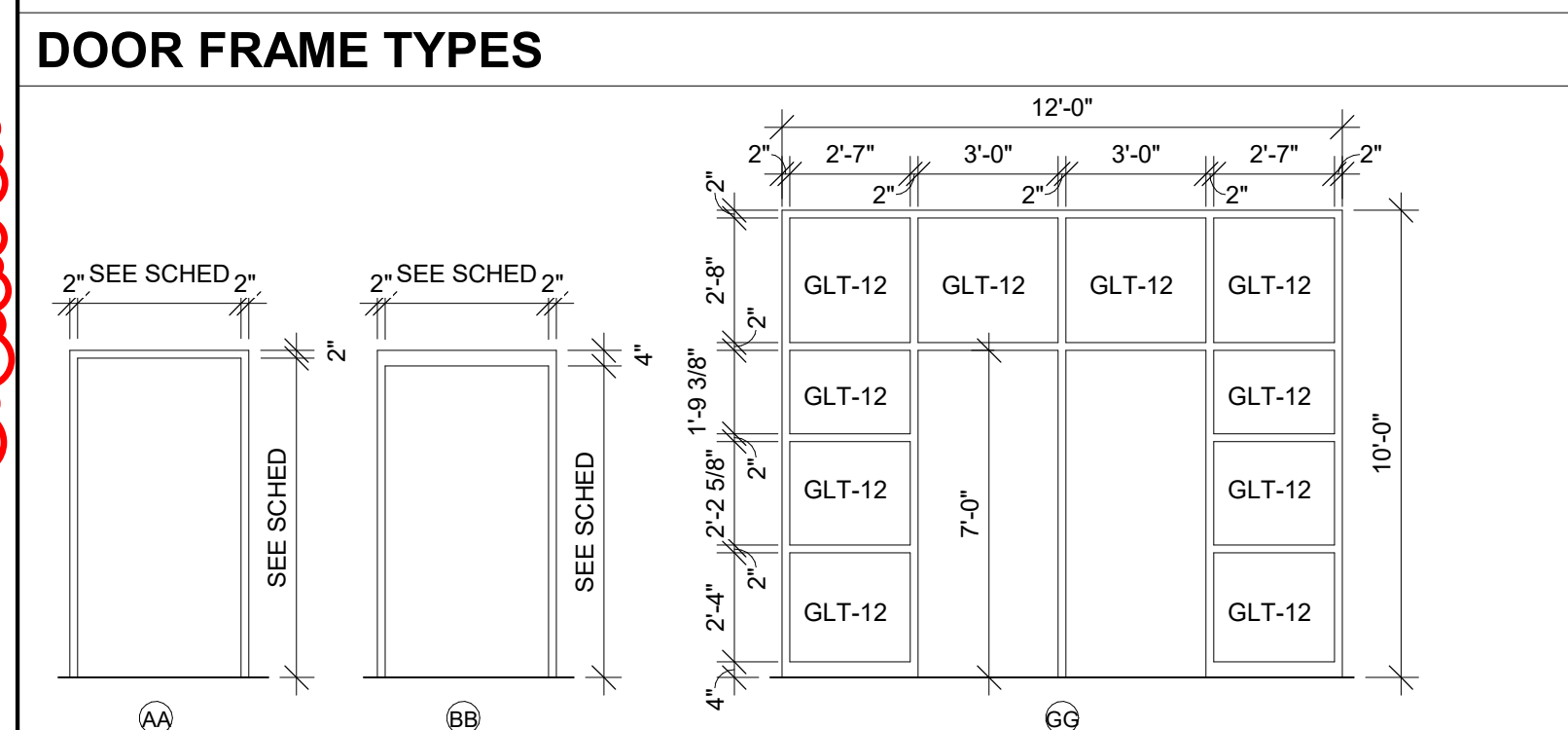
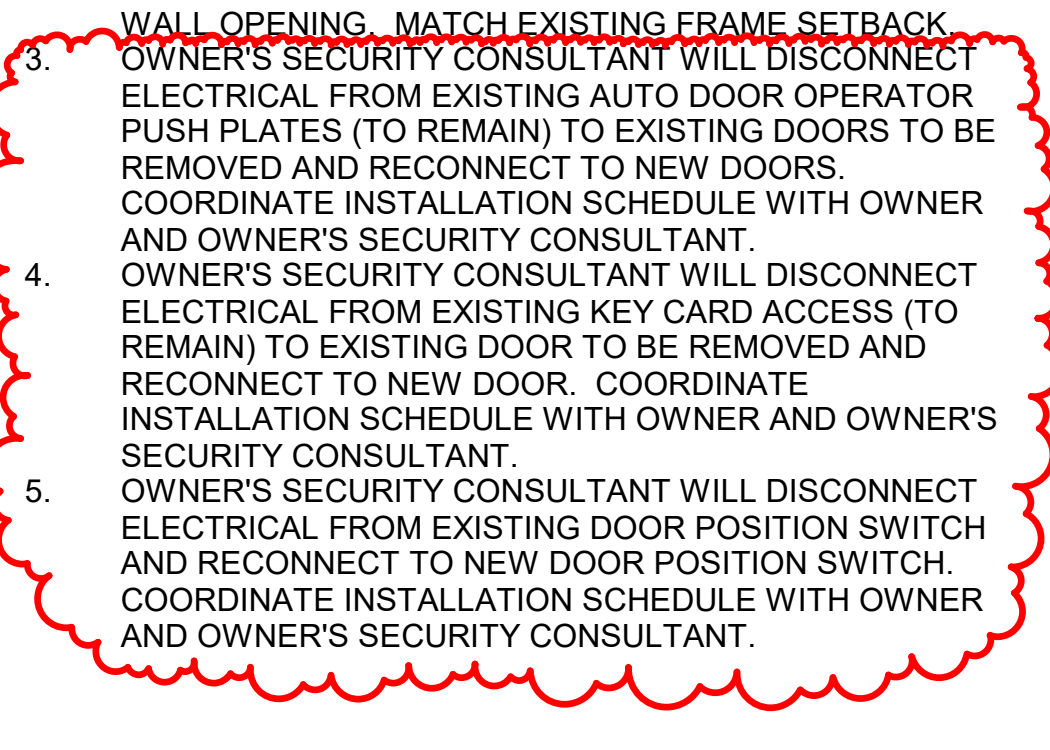
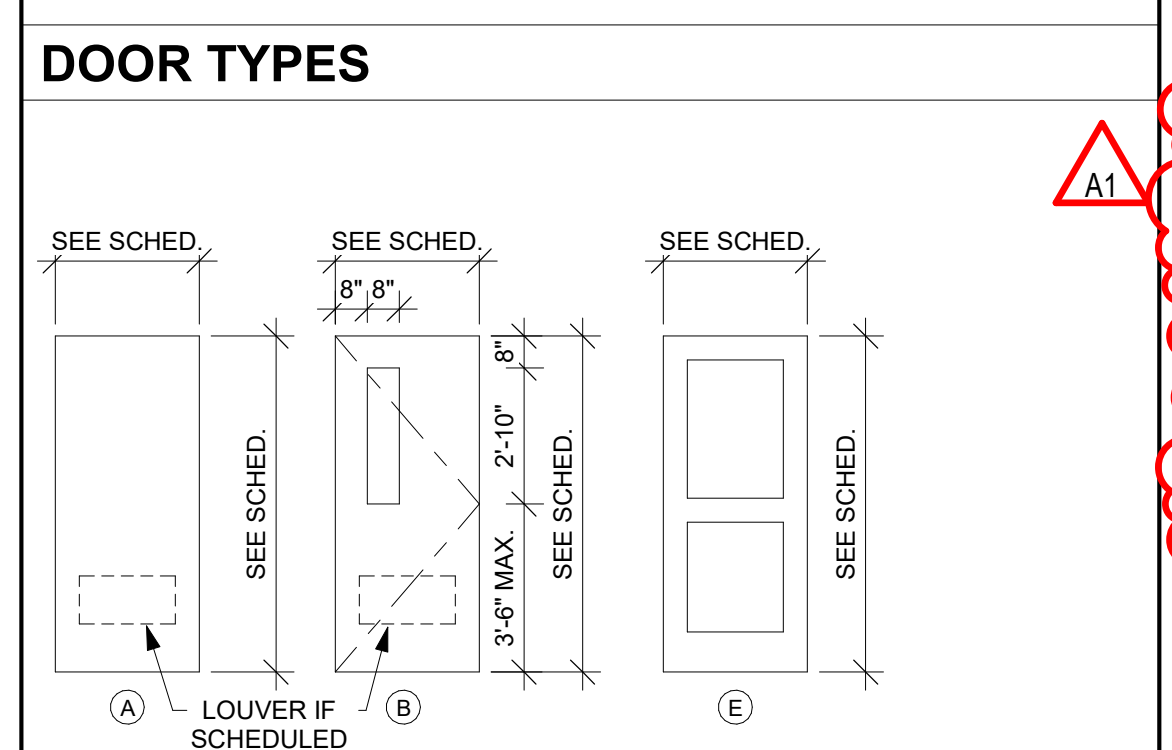
DOOR NO.	DOOR			FRAME			DETAILS					FIRE LABEL	HDWR GROUP	SIGNAGE	REMARKS
	SIZE			DOOR TYPE	GLASS TYPE	U-CUT OR LOUVER	FRAME ELEV	DEPTH	HEAD	JAMB	SILL				
	W	H	T												
1207A	3'-4"	7'-2"	1-3/4"	FG	A	---	ALUM	AA	4 1/2"	---	---	---	---	---	2.5
1207B	3'-0"	7'-2"	1-3/4"	FG	A	---	ALUM	AA	4 1/2"	---	---	---	---	---	2.5
1209.1	3'-0"	7'-2"	1-3/4"	FG	B	GLT-12	---	ALUM	AA	4 1/2"	---	---	---	---	2.5
1209.2	3'-0"	7'-2"	1-3/4"	FG	B	GLT-12	---	ALUM	AA	4 1/2"	---	---	---	---	2.5
1211.1	3'-0"	7'-2"	1-3/4"	FG	B	GLT-12	---	ALUM	AA	4 1/2"	---	---	---	---	2.5
1211.2	3'-0"	7'-2"	1-3/4"	FG	B	GLT-12	---	ALUM	AA	4 1/2"	---	---	---	---	2.5
1211.3	3'-0"	7'-2"	1-3/4"	FG	B	GLT-12	---	ALUM	AA	4 1/2"	---	---	---	---	2.5
1219A	3'-0"	7'-2"	1-3/4"	FG	A	---	ALUM	AA	4 1/2"	---	---	---	---	---	2.5
1611	3'-4"	7'-0"	1-3/4"	FG	A	---	ALUM	AA	4 1/2"	---	---	---	---	---	2.5
G100	3'-0"	7'-0"	1-3/4"	HM	A	---	EXIST WD	AA	5 3/4"	---	---	---	---	---	1
V100.1	3'-0"	7'-0"	1-3/4"	ALUM	E	GLT-12	---	ALUM	GG	4 1/2"	---	---	---	---	2.5
V100.2	3'-0"	7'-0"	1-3/4"	ALUM	E	GLT-12	---	ALUM	GG	4 1/2"	---	---	---	---	2.5

**DOOR SCHEDULE GENERAL NOTES**  
 HM = HOLLOW METAL ALUM = ALUMINUM FG = FIBERGLASS  
 A. SEE SPECIFICATIONS FOR DOOR HARDWARE GROUPS.

**DOOR SCHEDULE REMARKS**

- NEW DOOR SLAB IN EXISTING WOOD FRAME - FIELD VERIFY SIZE. PATCH EXISTING FRAME AS REQUIRED. NEW DOOR AND FRAME TO BE INSTALLED IN EXISTING WALL OPENING. MATCH EXISTING FRAME SETBACK.
- OWNER'S SECURITY CONSULTANT WILL DISCONNECT ELECTRICAL FROM EXISTING AUTO DOOR OPERATOR PUSH PLATES (TO REMAIN) TO EXISTING DOORS TO BE REMOVED AND RECONNECT TO NEW DOORS. COORDINATE INSTALLATION SCHEDULE WITH OWNER AND OWNER'S SECURITY CONSULTANT.
- OWNER'S SECURITY CONSULTANT WILL DISCONNECT ELECTRICAL FROM EXISTING KEY CARD ACCESS (TO REMAIN) TO EXISTING DOOR TO BE REMOVED AND RECONNECT TO NEW DOOR. COORDINATE INSTALLATION SCHEDULE WITH OWNER AND OWNER'S SECURITY CONSULTANT.
- OWNER'S SECURITY CONSULTANT WILL DISCONNECT ELECTRICAL FROM EXISTING AUTO DOOR OPERATOR PUSH PLATES (TO REMAIN) TO EXISTING DOORS TO BE REMOVED AND RECONNECT TO NEW DOORS. COORDINATE INSTALLATION SCHEDULE WITH OWNER AND OWNER'S SECURITY CONSULTANT.
- OWNER'S SECURITY CONSULTANT WILL DISCONNECT ELECTRICAL FROM EXISTING DOOR POSITION SWITCH AND RECONNECT TO NEW DOOR POSITION SWITCH. COORDINATE INSTALLATION SCHEDULE WITH OWNER AND OWNER'S SECURITY CONSULTANT.

**DOOR FRAME GENERAL NOTES**  
 EXIST WD = EXISTING WOOD ALUM = ALUMINUM  
 A. ---



Consultant:

**NORTHWOOD TECHNICAL COLLEGE - NEW RICHMOND EXTERIOR IMPROVEMENTS**

Project Location: 1019 SOUTH KNOWLES AVENUE, NEW RICHMOND, WISCONSIN 54017

Working Plans & Door Schedule

Project Title: NORTHWOOD TECHNICAL COLLEGE - NEW RICHMOND EXTERIOR IMPROVEMENTS

Project Location: 1019 SOUTH KNOWLES AVENUE, NEW RICHMOND, WISCONSIN 54017

Sheet Title: WORKING PLANS & DOOR SCHEDULE

HSR Project Number: 23016

Project Date: APRIL 2023

Drawn By: JTD

Key Plan:

Revisions:

No.	Description	Date
A1	ADDENDUM #1	05/04/2023

Graphic Scale: VARIES

Last Update: 5/4/2023 8:38:33 AM

# A101